

Presentation to the Harbor Soaring Society
April 5, 2016 – by Dick Odle

Why All The Fuss?

US Fish & Wildlife Service Involvement
In Fairview Park, Costa Mesa, CA

The History, Impact and Proposed Solution

Doron's Picture 1 of DG Path being laid - June 24, 2013



Doron's Picture 2 of DG Path being laid - June 24, 2013



DG path over Fed protected
Vernal Pool and San Diego
Fairy Shrimp habitat

Meeting with Baltazar Mejia, Senior Engineer

City of Costa Mesa, CA

September 17, 2014 at 10:00am, Conference Room 1A

Prepared by: Dick Odle – 8/17/2014

thermals1@verizon.net - 714-960-5161

Attending:

Henry Smith III, General Director HSS – henry.smith.3@earthlink.net

Ted Broberg, Secretary HSS – tbroberg@earthlink.net

James Sonnenmeier, AMA Leader Member – jrs36psu@gmail.com

Bruce Schaefer, 20-year Glider Flier – metaterra@msn.com

Subject: US Fish and Wildlife Service

Letter Date Stamped JUL 24 2014

Remediation Measures Fairview Park, Costa Mesa

An introduction to winch launching gliders at the park:

http://youtu.be/T_abpEX_sA8

Video credit: Doron Ben-Yehzekel and Tom Vincent



Produced by: G.D. Services
Carlsbad Field Office
Survey Contact: Chris Mader
GIS Contact: Terry McElroy

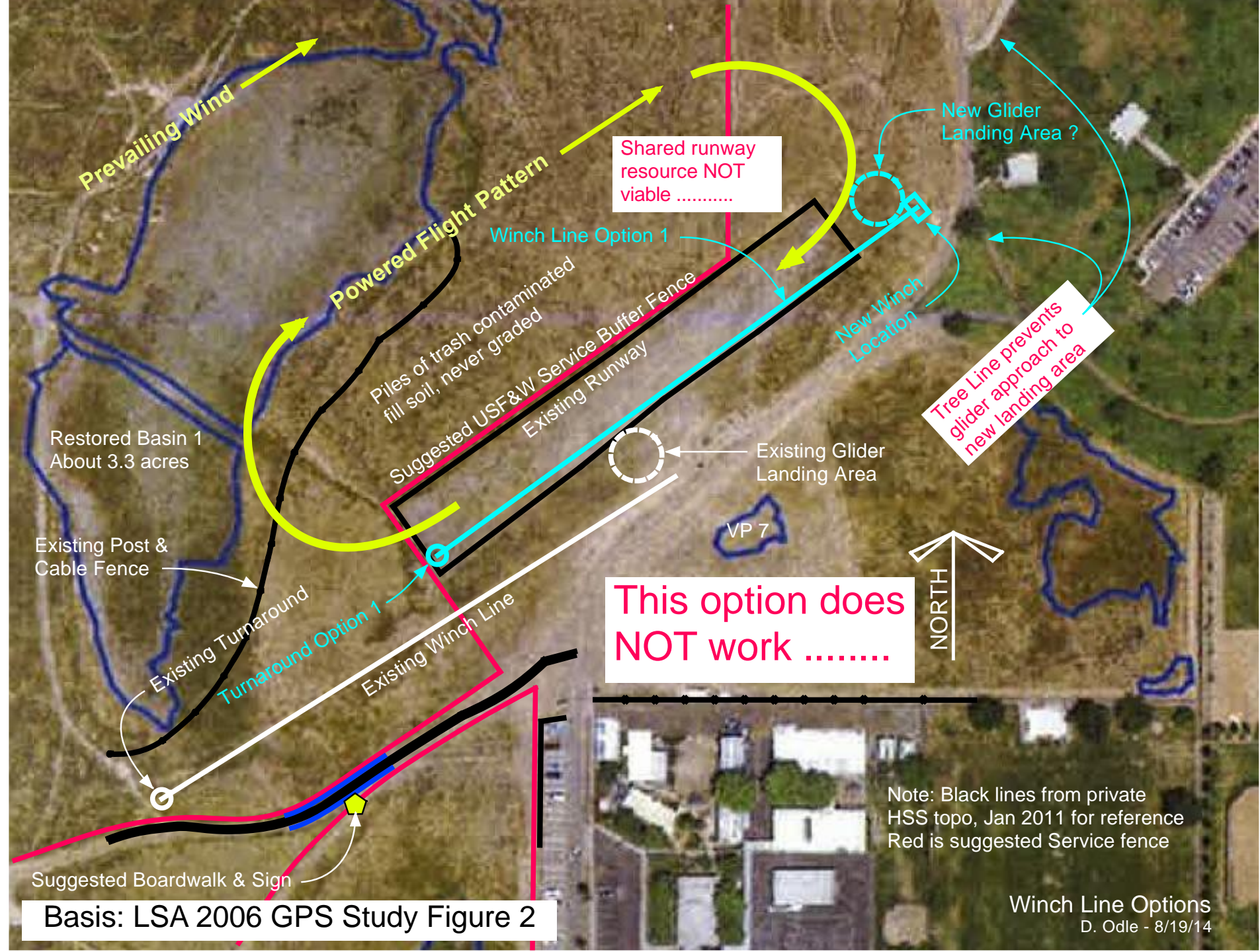
Map Date: 1 April 2018
Data Source: USFWS OFC/O
Image Source: USDA, NAD 83/12



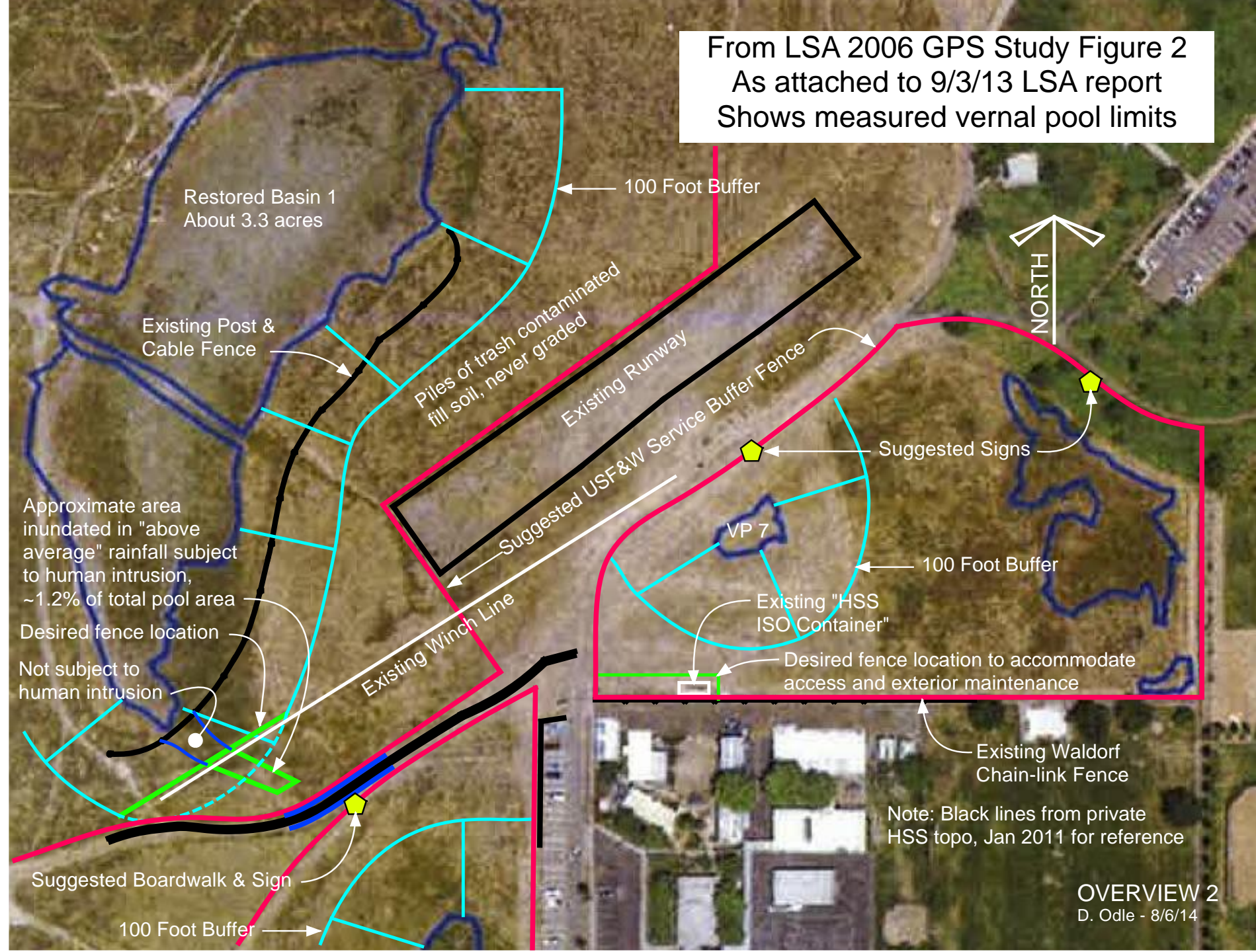
- | | |
|-------|------------------|
| Fence | Boardwalk |
| Sign | Fenced Boardwalk |



Figure 3. Location of fencing, educational signs and boardwalks needed for the protection of San Diego fairy shrimp habitat.

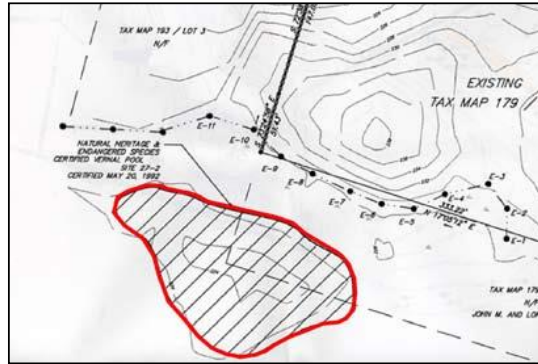


From LSA 2006 GPS Study Figure 2
As attached to 9/3/13 LSA report
Shows measured vernal pool limits



Protecting Vernal Pools

Buffer for Certified Vernal Pools in Jurisdictional Wetlands



A certified pool is located on plans for a proposed project (red line). The line is based on field indicators of hydrology, and represents the approximate mean annual boundary of the pool.

The regulations state that vernal pool habitat includes the basin and the area within 100 feet of its mean annual boundary, to the extent that such habitat is within an area subject to the Act (310 CMR 10.04).



This pool can be protected because it is located within a jurisdictional Bordering Vegetated Wetland (BVW, green shaded area). Any pool is protected under the WPA if it is contained within ILSF, BLSF, or other jurisdictional wetlands.

To determine how much of the pool and its surroundings are protected, a 100-foot "buffer" is drawn from the mean annual boundary of the pool (outer red line).



Like a classic Venn diagram, the "vernal pool habitat" protected by the Wetlands Protection Act regulations includes the pool and only the portion of its 100-foot "buffer" that is contained within a WPA jurisdictional wetland (purple shaded area).

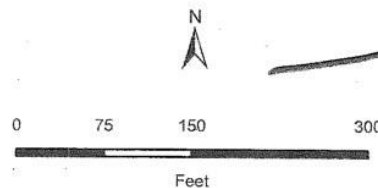
The BVW has its own 100-foot buffer zone, which encompasses the entire 100-foot zone associated with the vernal pool basin. However, that does not change the amount of protected "vernal pool habitat."

From the: VERNAL POOL MANAGEMENT PLAN
FOR THE CRESCENT HEIGHTS RESIDENTIAL DEVELOPMENT PROJECT
CITY OF SAN DIEGO SAN DIEGO COUNTY, CALIFORNIA
July 2011



Legend

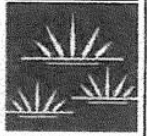
- Project Boundary
- Site Development Plan
- Vernal Pool Watershed
- Vernal Pool Location
- USFWS San Diego Fairy Shrimp Final Critical Habitat
- MHPA Limits



CRESCENT HEIGHTS
VERNAL POOL MANAGEMENT PLAN
Vernal Pool Area

GLENN LUKOS ASSOCIATES

Exhibit 3



X:\100 - 0362 ONLY\0163-61\PIE\2163-61_GIS\VPMP_GIS\163-61VPMP.mxd
January 5, 2011

Text in the report that speaks to this exhibit:

The Project establishes a 100-foot buffer between the edge of each vernal pool and the edge of development area that would provide a barrier to human intrusion and connect the pools to larger open space areas to the north and northwest. The buffer area would additionally minimize and avoid potentially adverse indirect "edge-effects" to the fairy shrimp.

From Fish and Wildlife Figure 2

Restored Complex #4

Inundated area subject to intrusion during this rain event

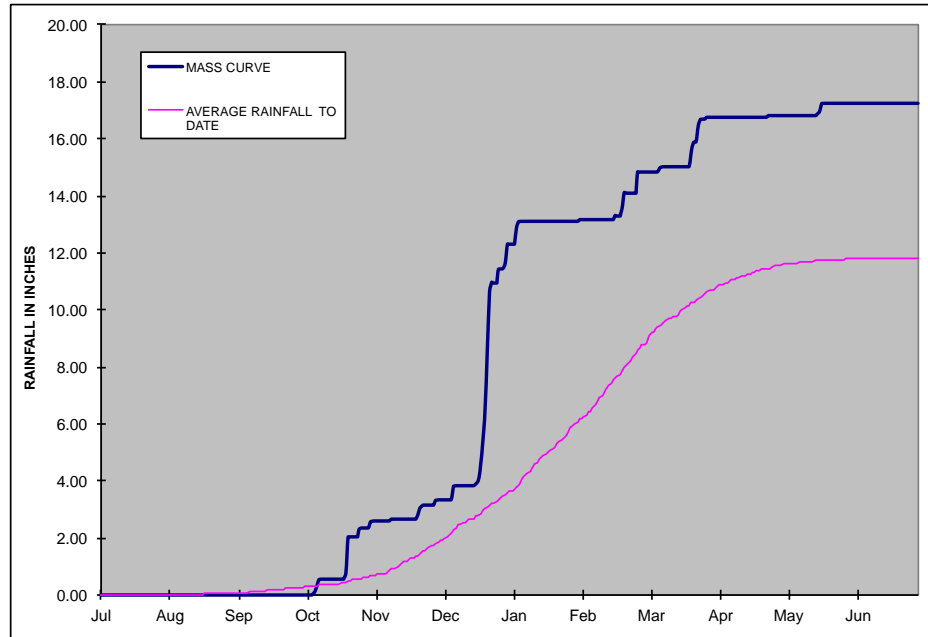
Winch Line

Runway

Restored Basin #1

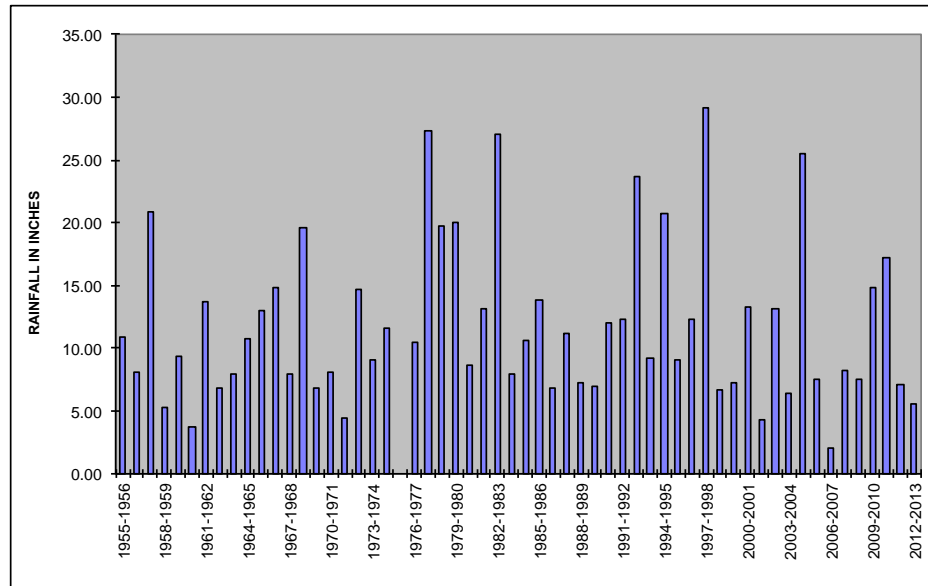


Costa Mesa #165 2010/2011 Season



From Orange County Public Works

Season Total vs. Average Rainfall
Costa Mesa #165



Example Rainfall Including 1/5/2011 Service Figure 2

ORANGE COUNTY PUBLIC WORKS

DAILY PRECIPITATION 2010-2011 SEASON

STATION COSTA MESA OCPW NO. 165

OBSERVATION TIME 8:00 AM OBSERVER OCPW

DAY	JULY	AUG	SEP	OCT	NOV	DEC	JAN	FEB	MAR	APR	MAY	JUN	DAY
1													1
2													2
3				0.02			0.57						3
4				0.01			0.22						4
5				0.03									5
6				0.23		0.50							6
7				0.25		0.01			0.14				7
8					0.09								8
9										0.01			9
10													10
11						0.01							11
12													12
13													13
14													14
15													15
16						0.06		0.16			0.06		16
17						0.04					0.10		17
18				0.04		0.59					0.29		18
19				0.19		0.85		0.23					19
20				1.27	0.14	1.12		0.58		0.03			20
21					0.26	2.06			0.63				21
22					0.09	2.07			0.26				22
23				0.03		0.34							23
24									0.59	0.01			24
25				0.25					0.21				25
26				0.01		0.46		0.72	0.01				26
27								0.01	0.01				27
28					0.17				0.02				28
29						0.22							29
30				0.24		0.66			0.02				30
31							0.05						31
TOTAL	0.00	0.00	0.00	2.57	0.75	8.99	0.84	1.70	1.89	0.05	0.45	0.00	TOTAL

---LEGEND---

A - ESTIMATED

C - INCOMPLETE

NR - NO RECORD

B - PARTIALLY ESTIMATED

D - DATE UNCERTAIN

T - TRACE

P - INCLUDED IN FOLLOWING TOTAL

REMARKS 41 days average Fairy Shrimp life cycle

SEASON TOTAL 17.24 "

Fairy Shrimp Life Cycle

- ◆ Must have inundated pool, defined by U.S. Department of Interior, April 19, 1996 report as 3cm deep (a bit more than an inch) 24 hours after rain event.
- ◆ Viable habitat defined by Service, Feb 15, 2002 report as pool 5cm to 30cm deep (2 to 12 inches) at 50 to 68 degrees F.
- ◆ Water chemistry is vital.
- ◆ **If viable pool**, shrimp hatch in 7 to 14 days after inundation depending on temperature.
- ◆ Shrimp grow to adulthood in about a month, lay eggs (cysts) and die.
- ◆ If temperature is not within desired range life cycle ceases.
- ◆ **Practical application of criteria:**
- ◆ In average rainfall month or year, area in question will not support viable inundation.
- ◆ Inundation will likely only occur every 4 to 5 years, on average, or 20% to 25% of the time.
- ◆ Given our historic winter and spring storms, it is likely to be sunny and warm just a few days after the rain event. **Example was 2010/2011 season.**
- ◆ Given that, if proven or accepted as historic fact, the area in question will dry out and/or rise in temperature such that the life cycle will never be completed.

Brandman Report August 5, 1995

Referencing Model Airplanes

2. Recreational Useage

None of the current recreational uses within the park are in conflict with preservation of the vernal pool habitat. The area has been used for a variety of recreational uses including jogging, bicycling, walking dogs, and in particular flying model airplanes. Given that these activities have been ongoing and given that the vernal pool habitat is quite healthy, it appears that all of these uses can coexist without restrictions to any of the groups.¹⁴

3. Potential Restoration

Based upon an evaluation of historic aerial photographs, it appears that the fill material placed upon Archeological Site Ora-58 resulted in reducing the size of Vernal Pool Basin 1 by approximately one-half. Restoration of the basin could be accomplished by removal of the stockpiled material. Potential impacts to Archeological Site Ora-58 resulting from removal of the stockpiled material would need to be coordinated with the Corps.

If you have any questions about this letter report, please contact Tony Bomkamp at (714) 250-5555.

Sincerely,

MICHAEL BRANDMAN ASSOCIATES



Tony Bomkamp
Regulatory Specialist

¹⁴In particular, use of the site by model airplane enthusiasts has been ongoing for many years. Their use of the site, including the mowing of "runways" through areas of the vernal pool habitat, has not contributed to degradation of the vernal pool habitat.

"In particular, use of the site by model airplane enthusiasts has been ongoing for many years. Their use of the site, including the mowing of "runways" through areas of the vernal pool habitat, has not contributed to degradation of the vernal pool habitat."

From Friends of Fairview Park Newsletter - April/June 2005

Example of symbiotic relationship between Vernal Pools, Springtime Activities and Soaring
..... wherein "and, of course, put the park to good use."

Southern California Soaring Club(SC2) Contest

The Harbor Soaring Society sponsored the contest at Fairview Park and, of course, put the park to good use. Participants were treated to special visit by two of the top R/C pilots in the world, Joe Wurts and Larry Jolly.



A few models ranging in price from \$200 all the way up to over \$2000.

Some of the contestants getting ready for a "Pilots meeting".



Pre-contest flight test to make sure the "winching equipment" was set up properly. The winching equipment is what propels the sailplanes into the air.

Winter Tour Pictures February 26th, 2004



Spring Park Tour and Easter Egg Hunt March 26th, 2004



The Way Forward

Being Good Stewards of Fairview Park Flying Site
... where flying is a privledge, not a right

Fly in accordance with the Flight Safety Rules...

Greet park visitors with a cheery smile...

Answer questions...

Show them your aircraft and how it works...

Offer FREE Flight Lessons for the entire family...

Simple stuff. Encourage all fliers to do the same...

... and explain why they should